

JLS Flute Blocks (#242055)

JLS Flute Blocks are a fantastic way to hold flutes safely and securely while assembling, padding and adjusting. Flute Blocks leave your hands free and keep the flute off the bench, reducing inadvertent scratches and keeping the instrument clean.



Fig. 1: Flute Blocks and Piano Base.

- Each Flute Block set comes with two hinged Cradle Blocks and a removable Piano Base plate. (Fig. 1)
- The blocks can be used to hold the flute body with or without the footjoint attached, or a single block can be used with the Piano Base to securely hold the footjoint separately.
- Place flute receiver end in felt cradle and gently tighten the finger screw.
- Place body tenon end (or footjoint end if cradling an assembled body) in the second cradle and gently tighten the finger screw.
- The innovative design allows for 360° access that makes feeler use a breeze (Fig. 4-7).

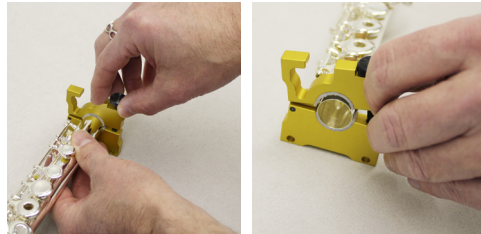


Fig. 2-3: Placing flute ends in cradles. Don't over-tighten screw.

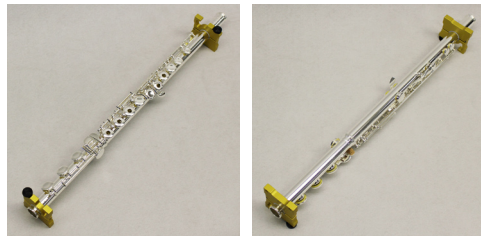


Fig. 4-5: Rotating the Flute Blocks allows 360° access.

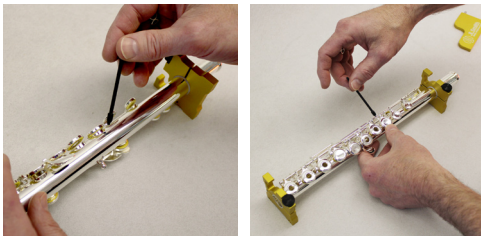


Fig. 6-7: Using a feeler with both hands free.

- Milled cutouts for screwdrivers provide easy access to the footjoint screw, D-key and trill key pivot screws. (Fig. 8-9)
- Convenient design allows for leak light insertion from either end. (Fig. 10)
- The blocks can be used to hold the flute body with or without the footjoint attached, or a single block can be used with the Piano Base to securely hold the footjoint separately.
- Base plate pins insert into either side of the cradle depending on how you want to orient the body (Fig. 11).

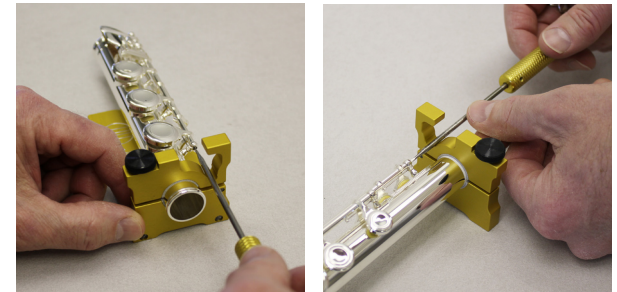


Fig. 8-9: Screwdriver access slots orient to pivot screws or trill and D-keys.

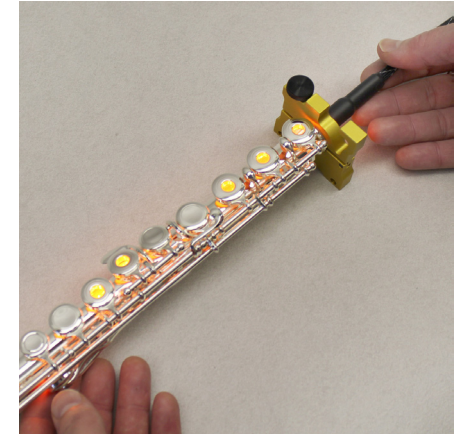


Fig. 10: Leak light inserts from either end.

Holding the footjoint:

- The Piano Base plate allows you to hold the footjoint independent of the body as shown in Fig. 8. The plate allows access to the D# pad with a feeler on either a B or C footjoint. The screwdriver cutout allows access to the footjoint rod screw.
- The cutaway shape of the Piano Base allows easy access to the D# pad with a feeler on either a B or C footjoint. The screwdriver cutout allows access to the footjoint rod screw.
- The blocks should be oriented to allow proper access to the pivot screws.

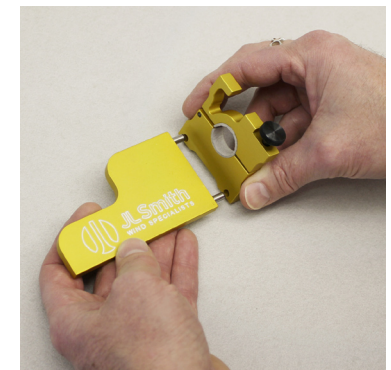


Fig. 11: Inserting the Piano Base.